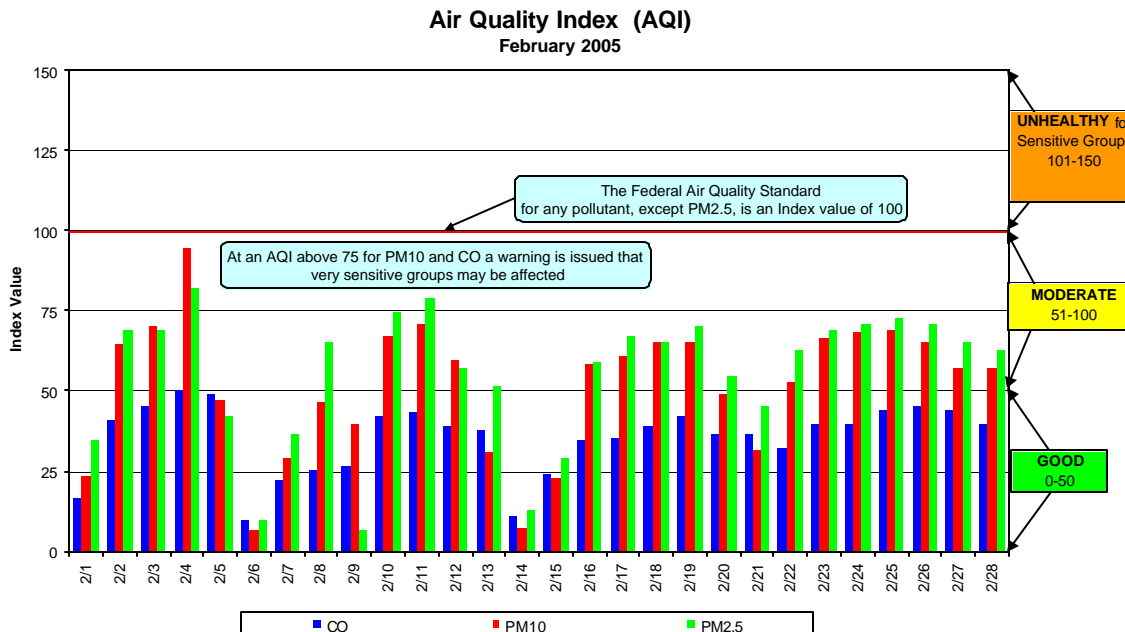


Air Quality Report February 2005

Below is the maximum Air Quality Index (AQI) for the period February 1 through February 28, 2005. The AQI data that is reported here is the highest value during the previous 24 hours as reported at 8 a.m. on the date given. All other data is reported on the actual date of occurrence. The AQI information is updated hourly on the Department of Ecology and SCAPCA web page (http://www.scapca.org/air_quality.asp).



Maximum for this reporting period

Pollutant	AQI/Concentration	Location	Date
CO	50/ 4.5 ppm	Third & Washington	2/3/05
PM ₁₀	92/ 138 $\mu\text{g}/\text{m}^3$	Freya & Ferry	2/3/05
PM _{2.5}	79 / 30 $\mu\text{g}/\text{m}^3$	Freya & Ferry	2/3/05
O ₃	No Data		

Maximum for the current year

Pollutant	AQI/Concentration	Location	Date
CO	50/ 4.5 ppm	Third & Washington	2/3/05
PM ₁₀	92/ 138 $\mu\text{g}/\text{m}^3$	Freya & Ferry	2/3/05
PM _{2.5}	79 / 30 $\mu\text{g}/\text{m}^3$	Freya & Ferry	2/3/05
O ₃	No Data		

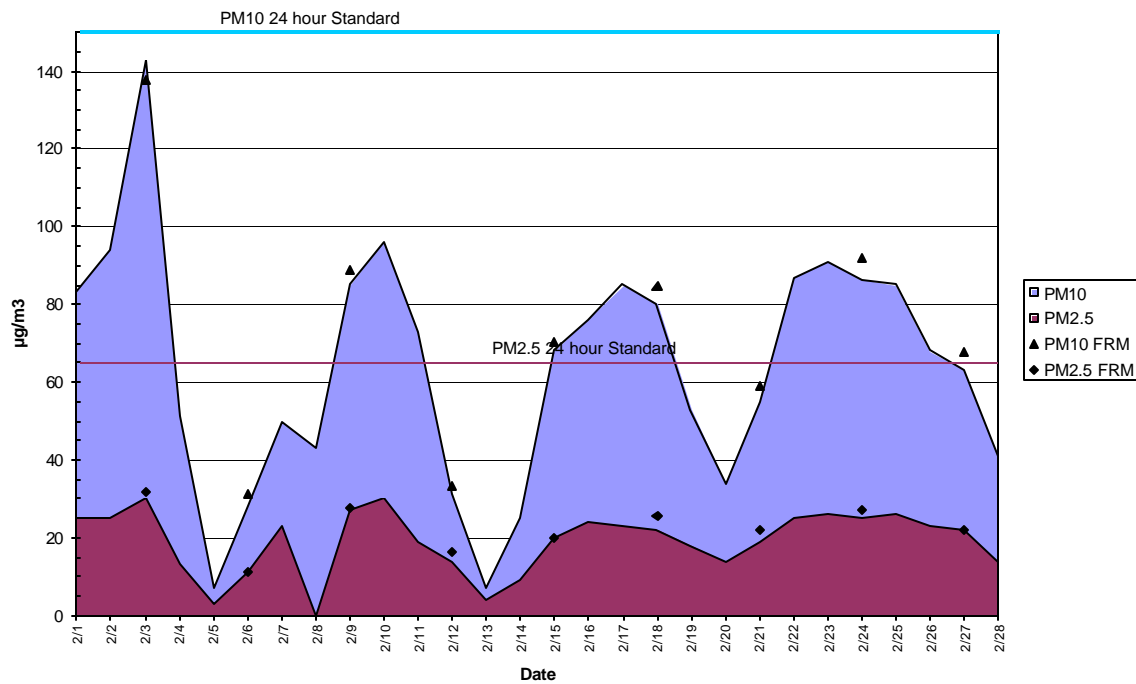
AQI Summary as of February 28, 2005

Category	Number of Days This Year	Last Year to Date
Good (0-50)	31	45
Moderate (51-100)	28	14
Unhealthy for Sensitive Groups (101-150)	0	0
Unhealthy (151-200)	0	0
Very Unhealthy (201-300)	0	0
Hazardous (>300)	0	0

Spokane County has not exceeded federal air quality standards to date for calendar year 2005.

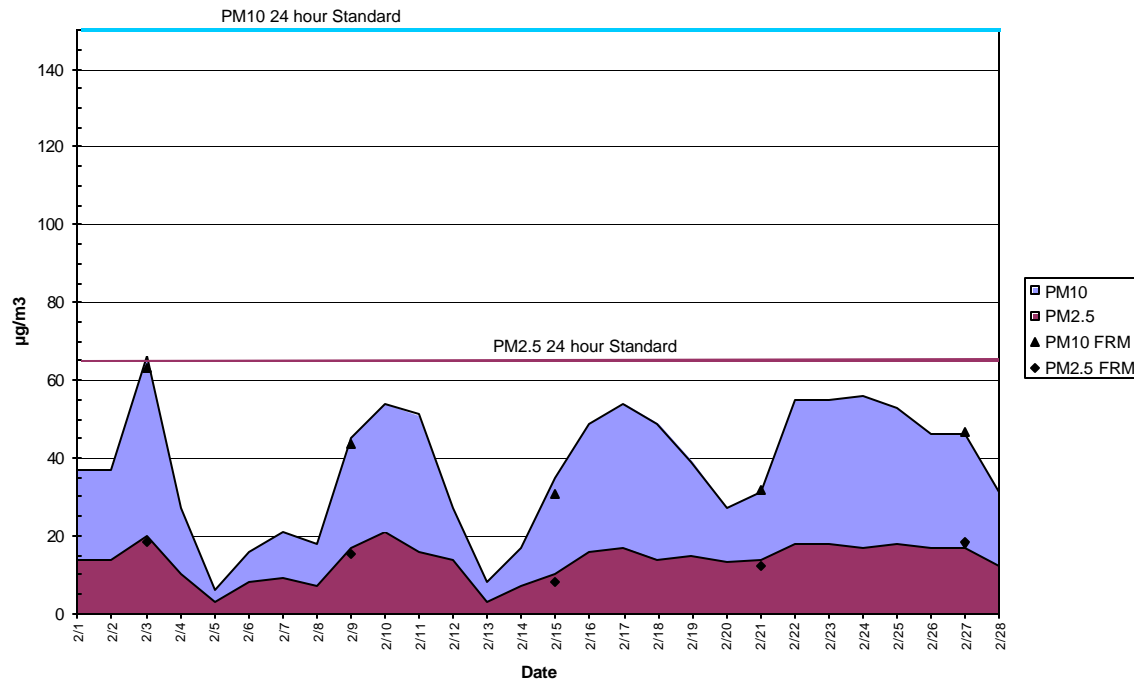
The next chart is a comparison between the different size particulate. The data is from the Freya & Ferry site located in a commercial, light industrial area on the east edge of the City of Spokane. On the chart data is shown with the result of continuous monitors in solid colors and the filters of the Federal Reference Method (FRM) samplers as points. The correlation is 1.00 for PM₁₀ for the month. The PM_{2.5} correlation was 0.99.

Freya & Ferry Particulate Matter Data
24hr Average Daily Maximum



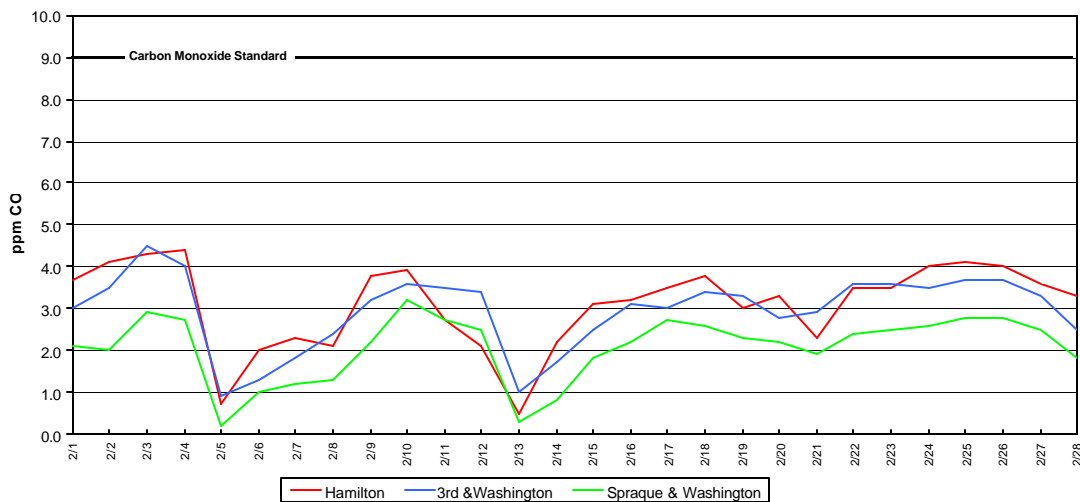
The data below is from the Monroe & College site located on the north side of the river just northwest of downtown. The correlation is 0.94 for PM₁₀ for the month. The PM_{2.5} FRM correlation with the TEOM was 0.87. The FRM samplers are run on a one in six schedule so that only five points are available for a monthly correlation calculation.

Monroe & College Particulate Matter Data 24hr Average Daily Maximum



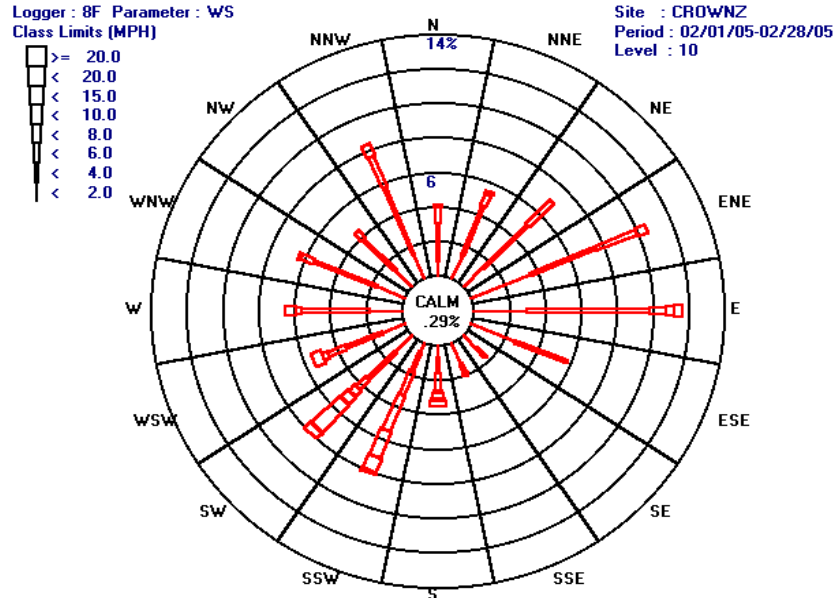
Below is a chart showing the daily maximums at Spokane's CO monitoring sites for this reporting period. The data from the special study site at the Hutton Building on Washington Street has been added for the winter CO season.

Comparison of Maximum Daily 8 Hour Average CO Values



Ozone no data. Ozone is monitored May 1 through September 30.

Wind data from the Freya and Ferry Site (Crown Z) for the reporting period.



Community Assessment - Air Toxic Monitoring

This year SCAPCA will be conducting an assessment of impacts by air toxics in the Spokane area. We will be collecting and testing a wide variety of toxic pollutants. The results of the chemical testing of the samples will have a long turn around time and will be report as the results come in. The mass loading on the filter will be available in time to go into this report each month. Below is the mass loading for PM₁₀ and PM_{2.5} at each of the sites. Two new sites have been established as part of this study one in the Hillyard area, called District 81, and one in the Millwood area, called Orchard Center. The Turnbull results are also included on the chart.

